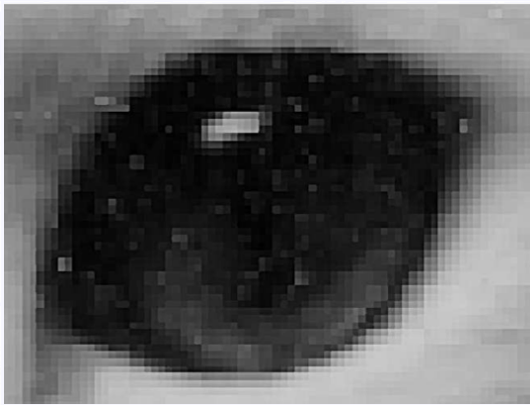
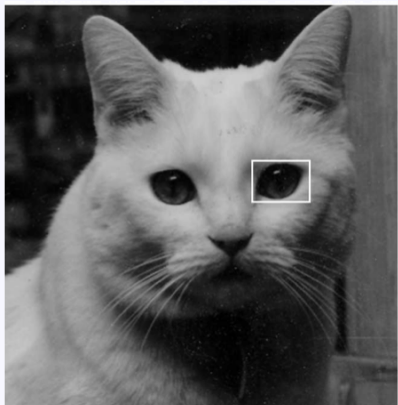


Images and Hardware

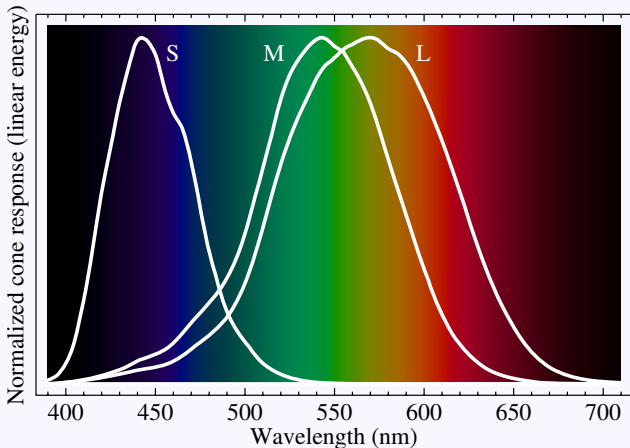
University of California Riverside

Raster image

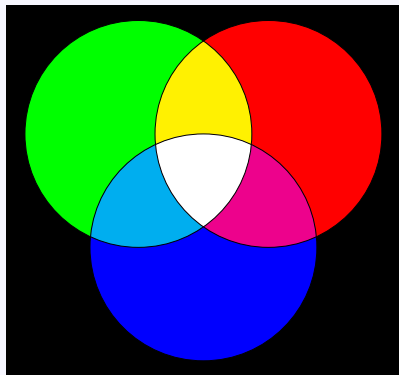


Human vision

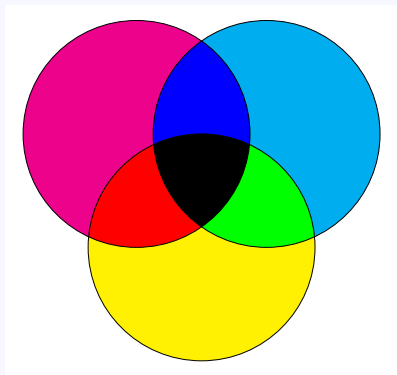
- Eye contains three types of cells (“cones”)
- Sensitive to red, green, and blue
- Other colors seen as mixtures of these



Color representation



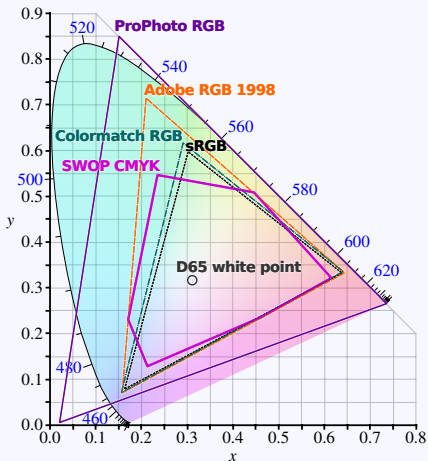
Additive
RGB



Subtractive
CYMK

Human vision

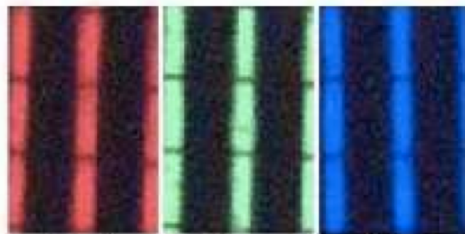
- RGB cannot represent everything



Raster devices



Raster display



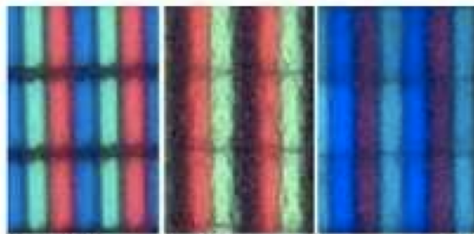
Red

Green

Blue



60 x Magnification



White

Yellow

Image



60 x Magnification

Attribution

- [1] BenRG. Cone-fundamentals-with-srgb-spectrum.svg.
<https://commons.wikimedia.org/wiki/File:Cone-fundamentals-with-srgb-spectrum.svg>. public domain.
- [2] BenRG and cmglee. Cie1931xy_gamut_comparison.svg.
https://commons.wikimedia.org/wiki/File:CIE1931xy_gamut_comparison.svg. CC BY-SA 3.0.