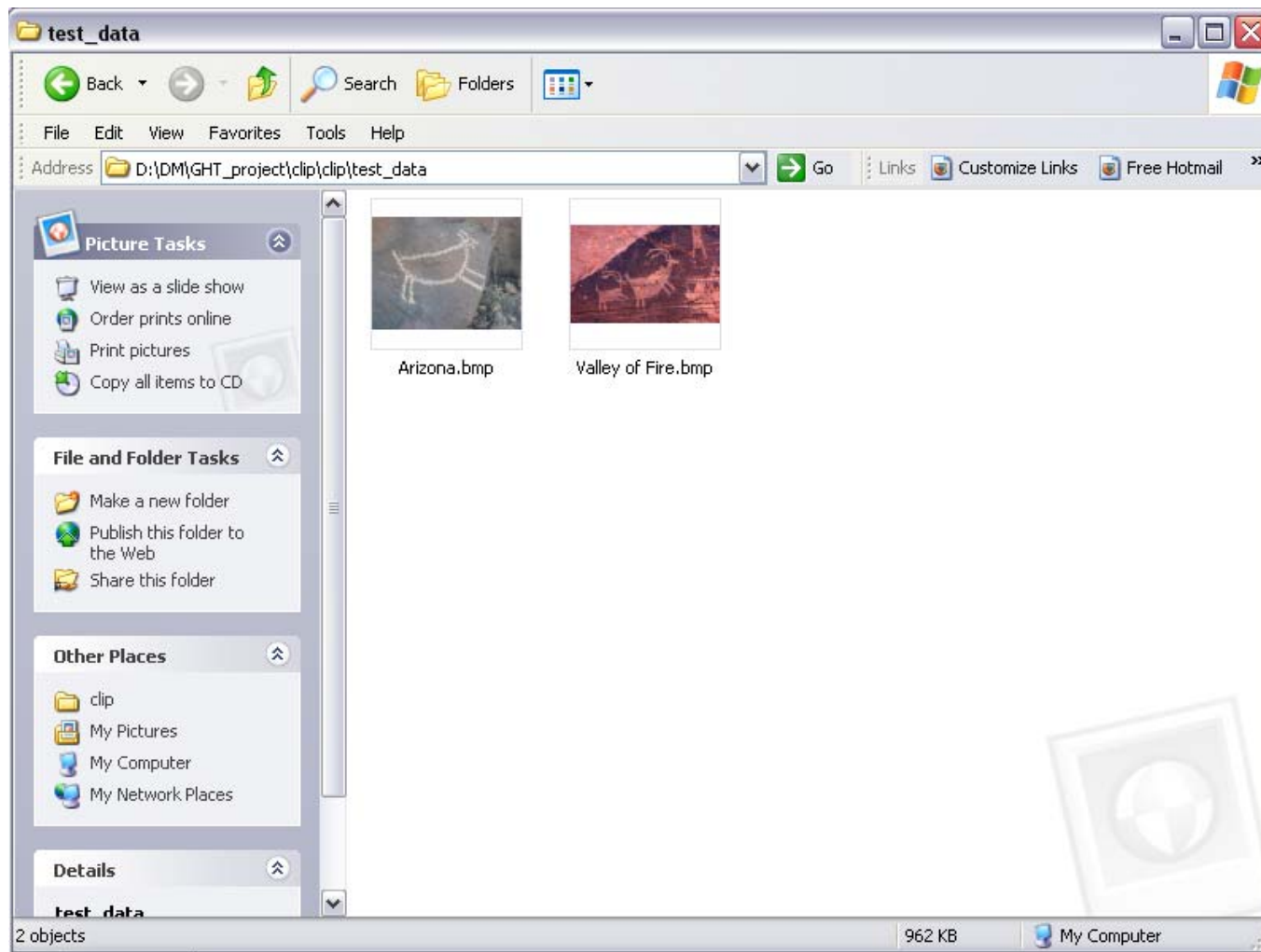


Instruction for Petroglyph Annotator

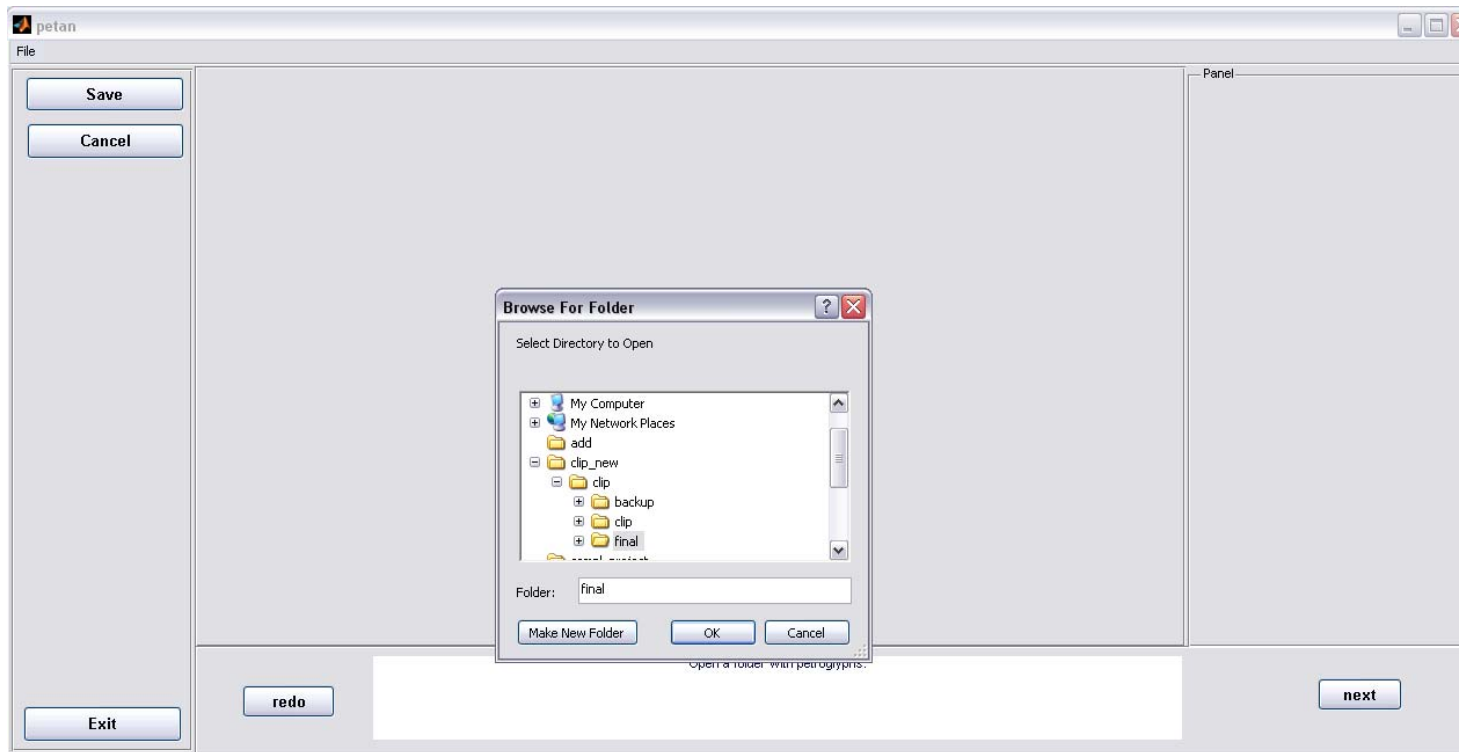


Put the petroglyph photos all in one folder (photos could be in either bmp or jpg format).

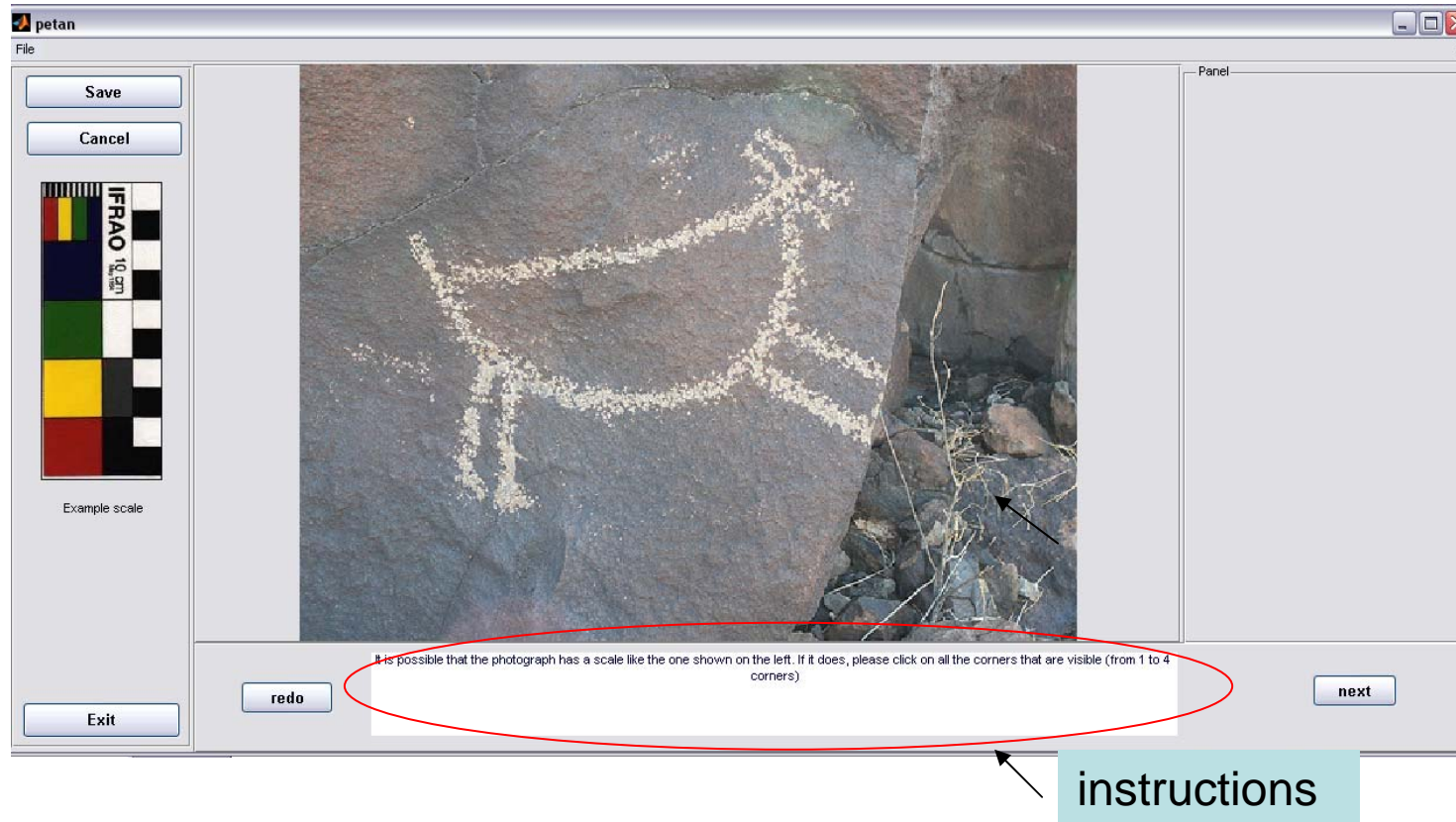
Run the “petan.m”



Click “File” on the top left, then click “Open”, choose the folder with the petroglyphs

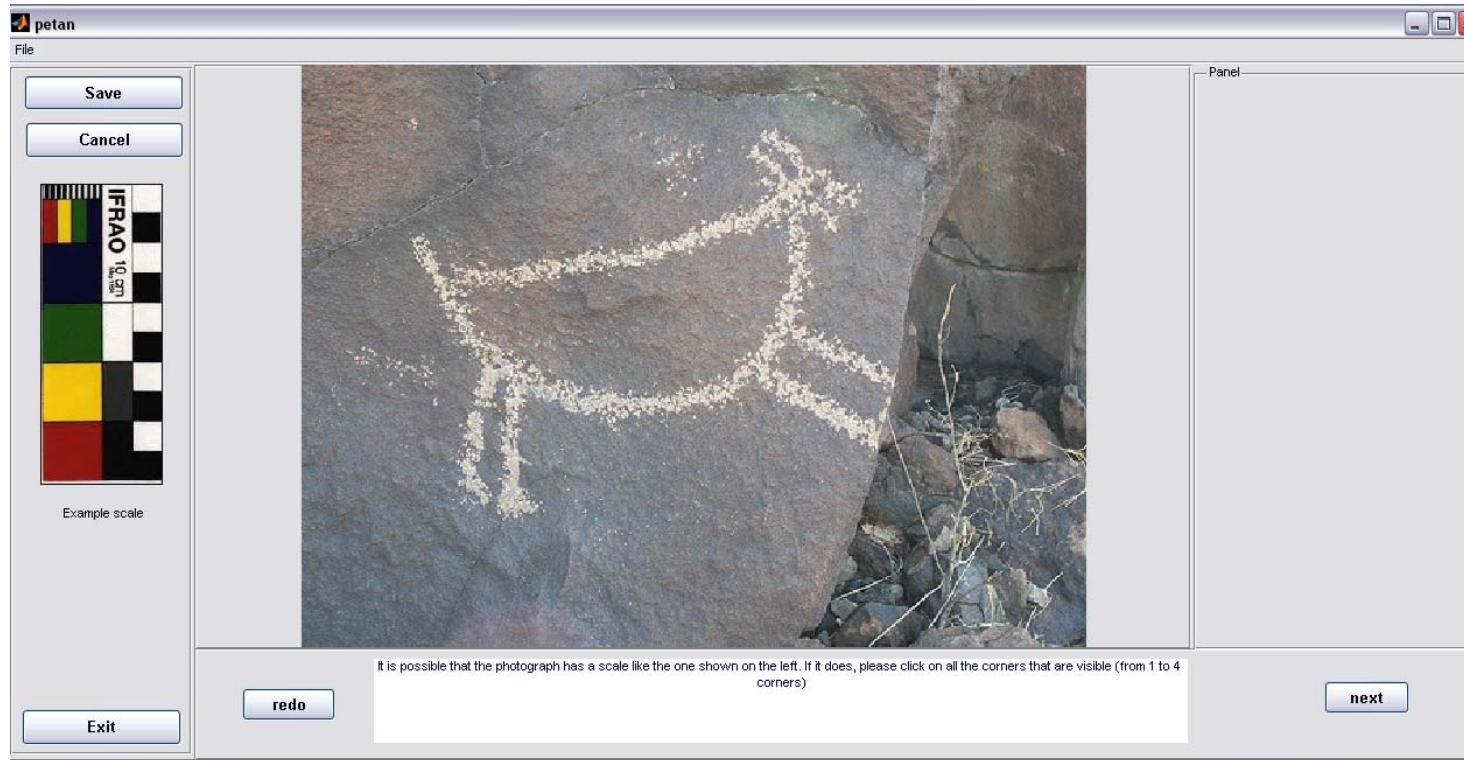


After choosing the folder, the first image will show up in the main window



In every step, the instruction will be shown in the text box on the bottom.

Step1: Enter “Scale” information

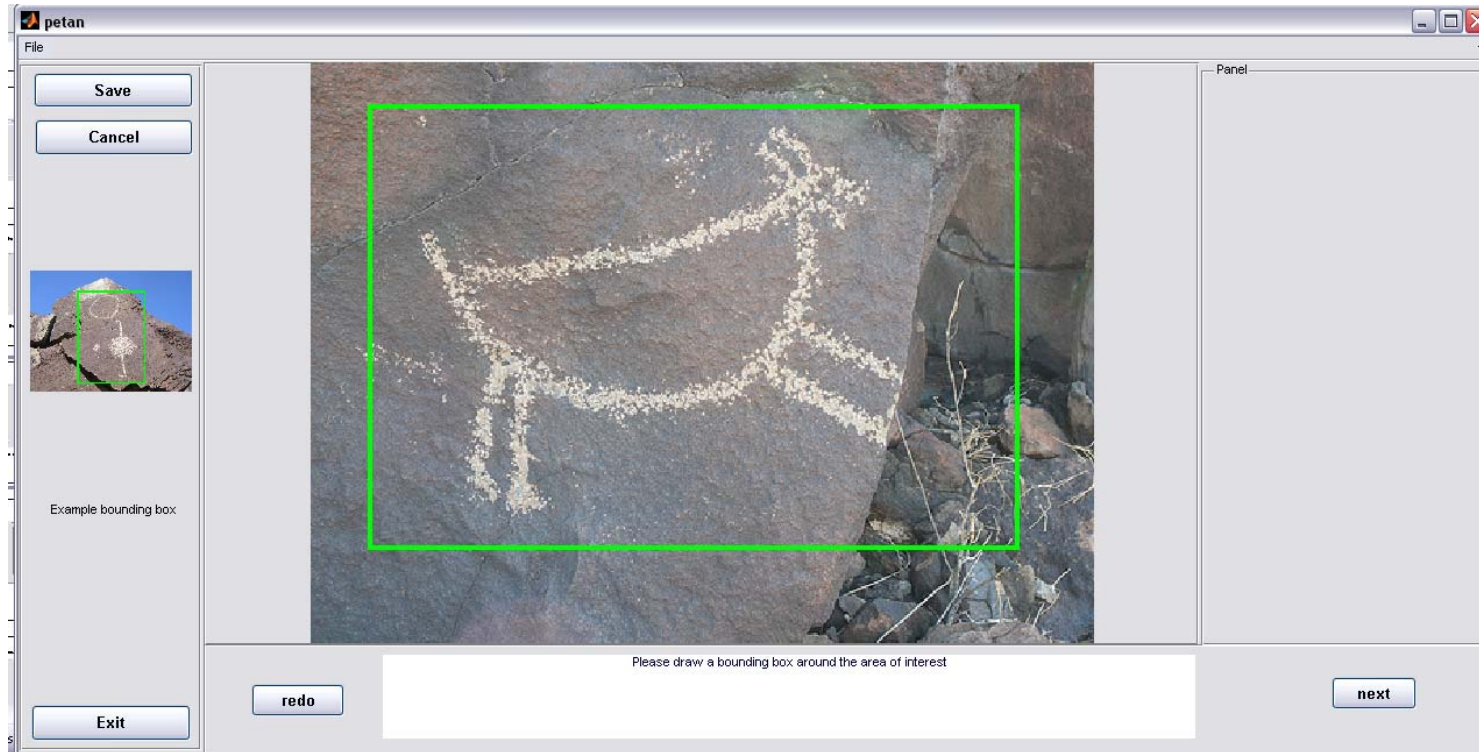


In this step, see *if* there is a “color-scale” present in the image. A sample scale is shown in the left column.

If so, click once on each of the corners of the scale (from zero to four corners may be visible).

If not, click “next” button.

Step 2: Draw a boundary box



In this step, draw a boundary box around the area of interest. Leave a little room around the shape.

Click “next” button after finishing drawing.

An example is shown in the left column.

Step 3: Draw an approximate boundary of the object of interest

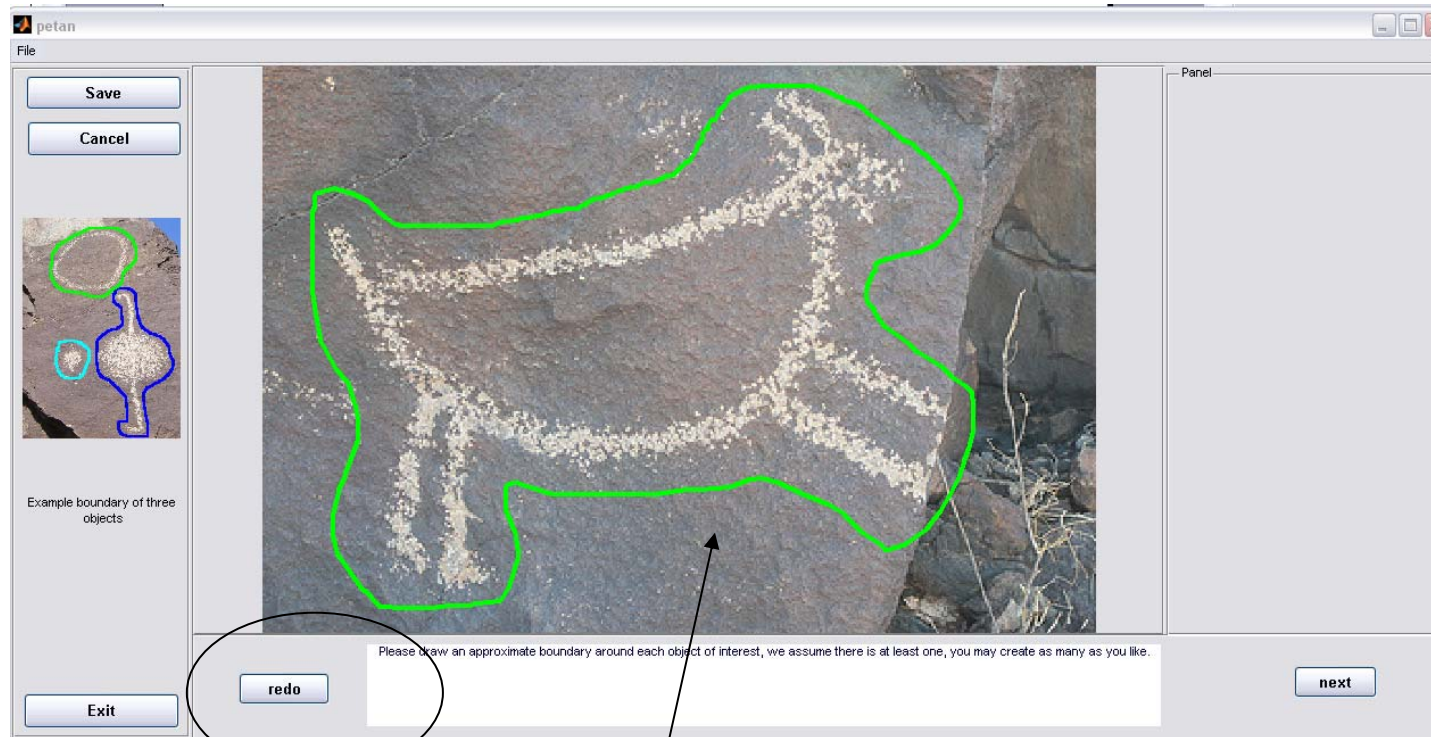


In this step, draw an approximate boundary around each object (if more than one).

Click “next” button after finishing drawing.

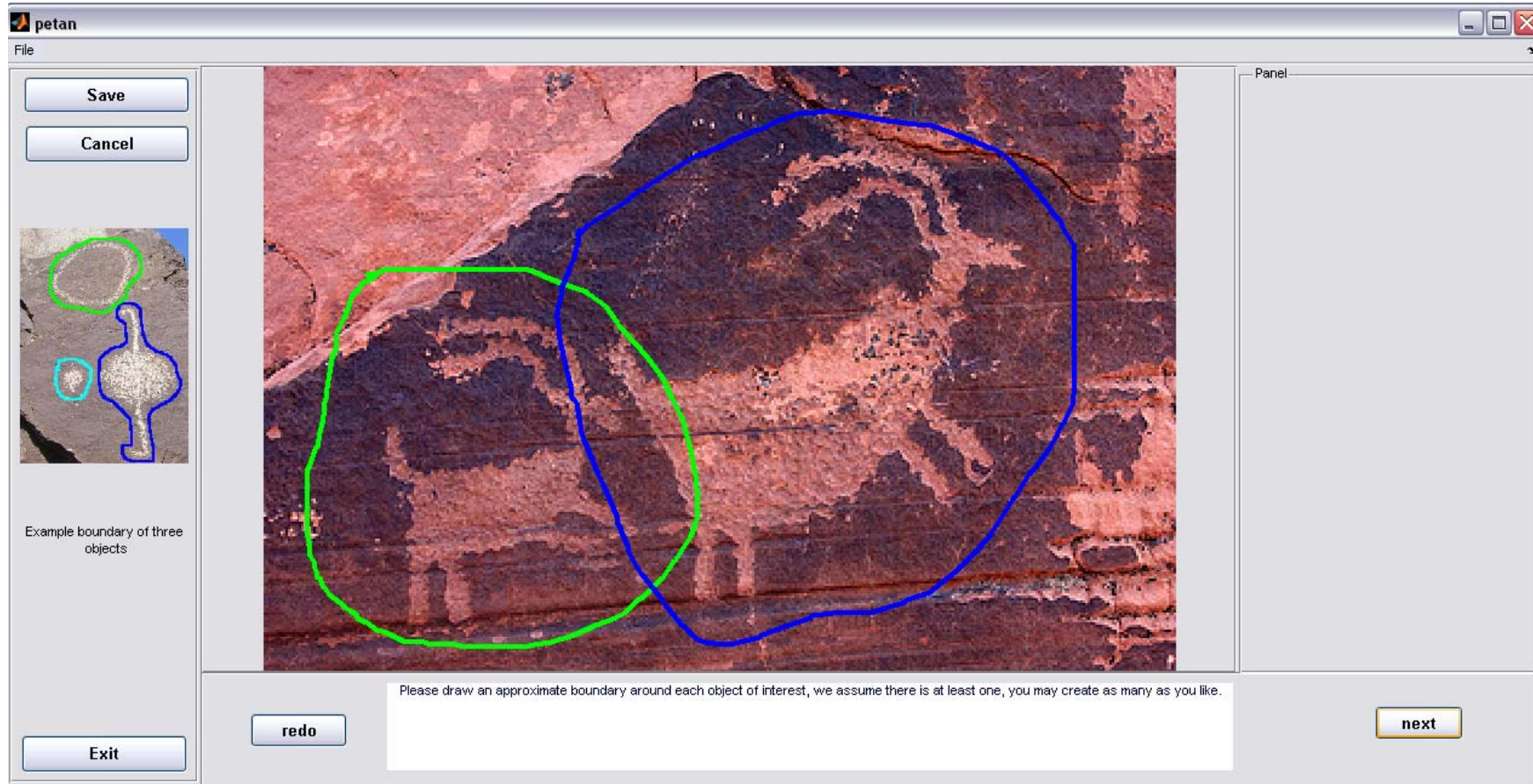
An example is shown in the left column.

Tip: redo button



In every step, there is a “redo” button that allows the user to redo the drawing step.

A different boundary is drawn this time.



Some images have multiple objects in there.

You can draw up to 3 different objects from each image, and they will be shown in color "green", "blue" and "cyan" in that order. If there are more than three objects, just pick the three most important ones.

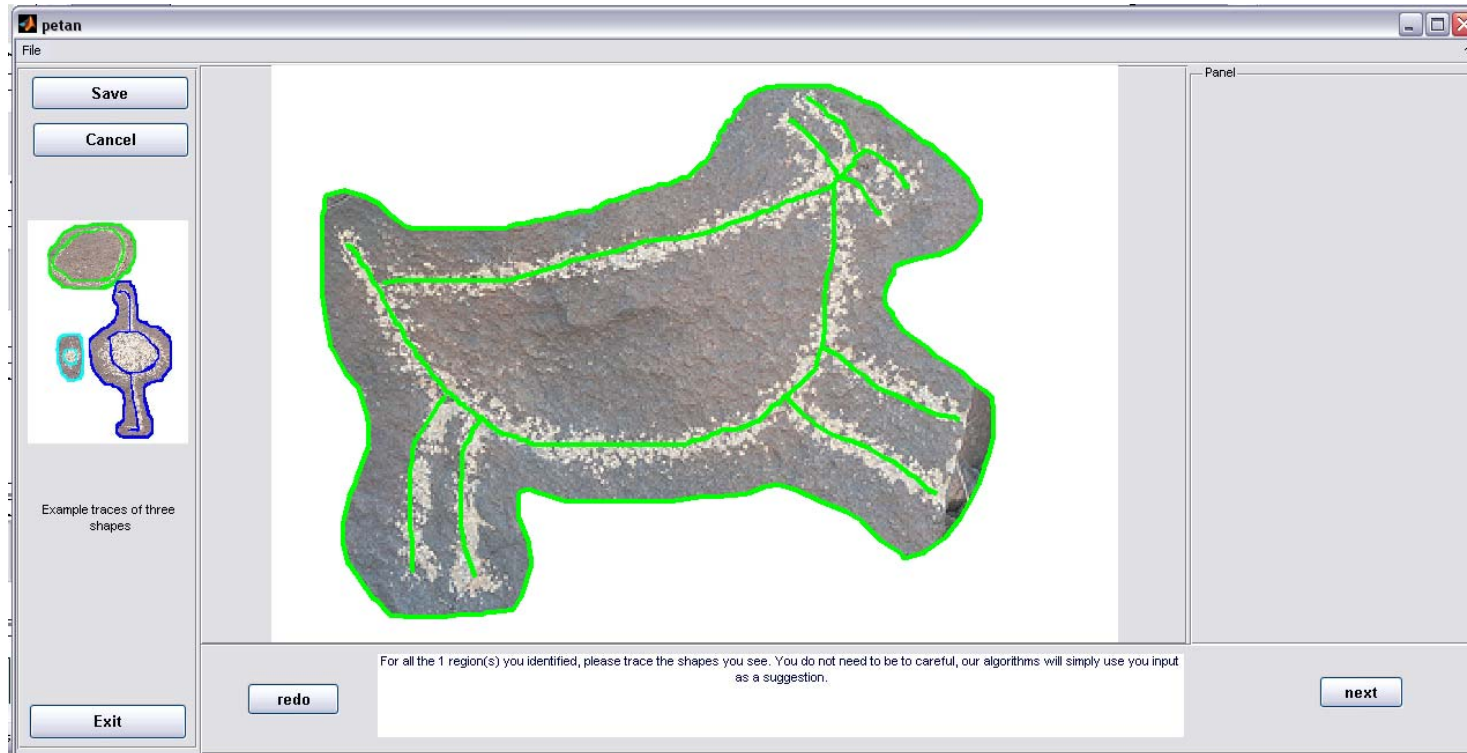
Some Tips



Do not touch the outer boundary when drawing.

Use "redo" button to try another time in case the previous attempt touched the outer boundary.

Step 4: Trace the shape

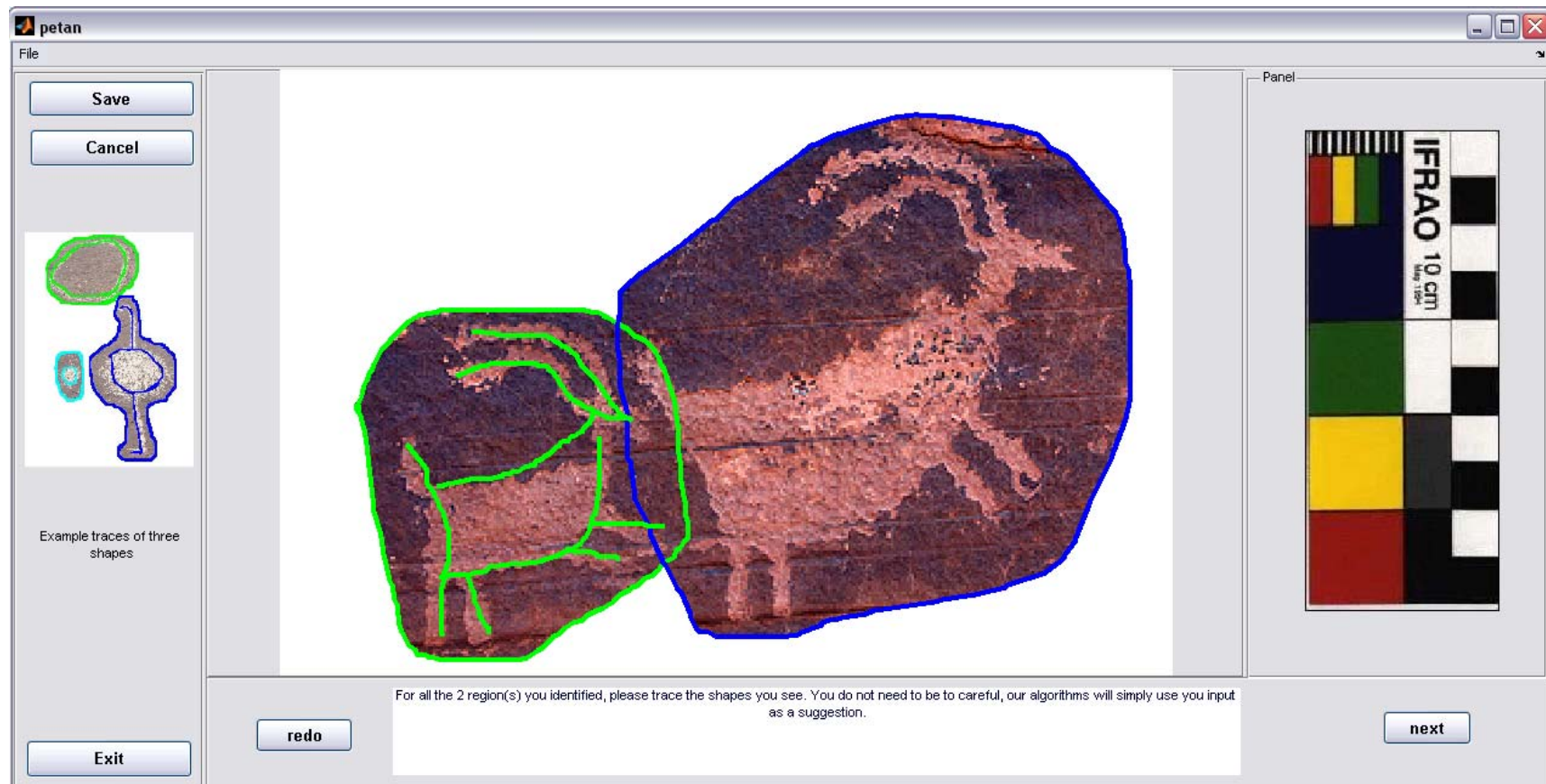


In this step, trace the shape. You can draw multiple lines.

Click “next” button after finishing drawing.

It might take a few seconds to process after you click "next",

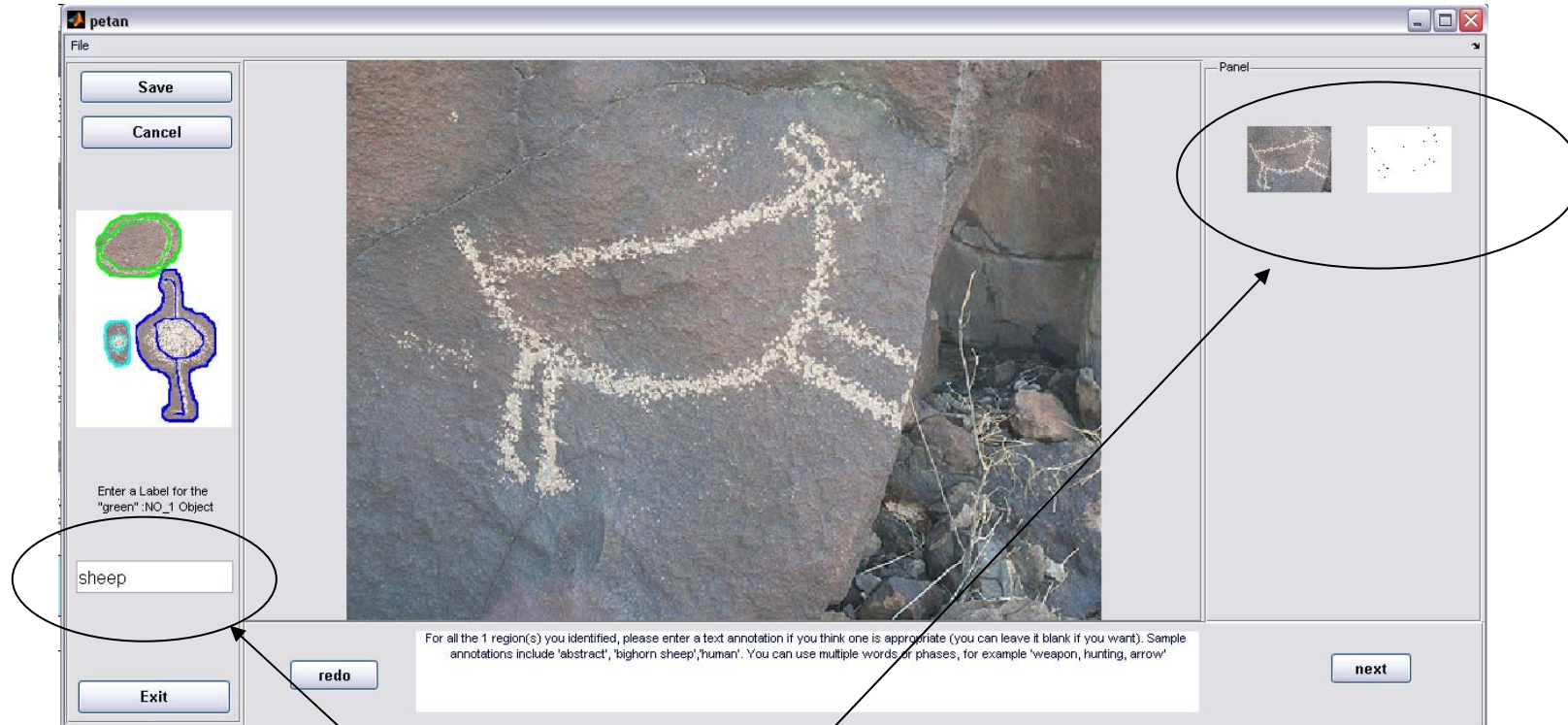
DO NOT click "next" twice.



In case of multiple objects, please follow the same order as in last step of drawing boundaries for each of the interested objects.

The color gives the hint of ordering :First: Green, Second: blue, Third: cyan.

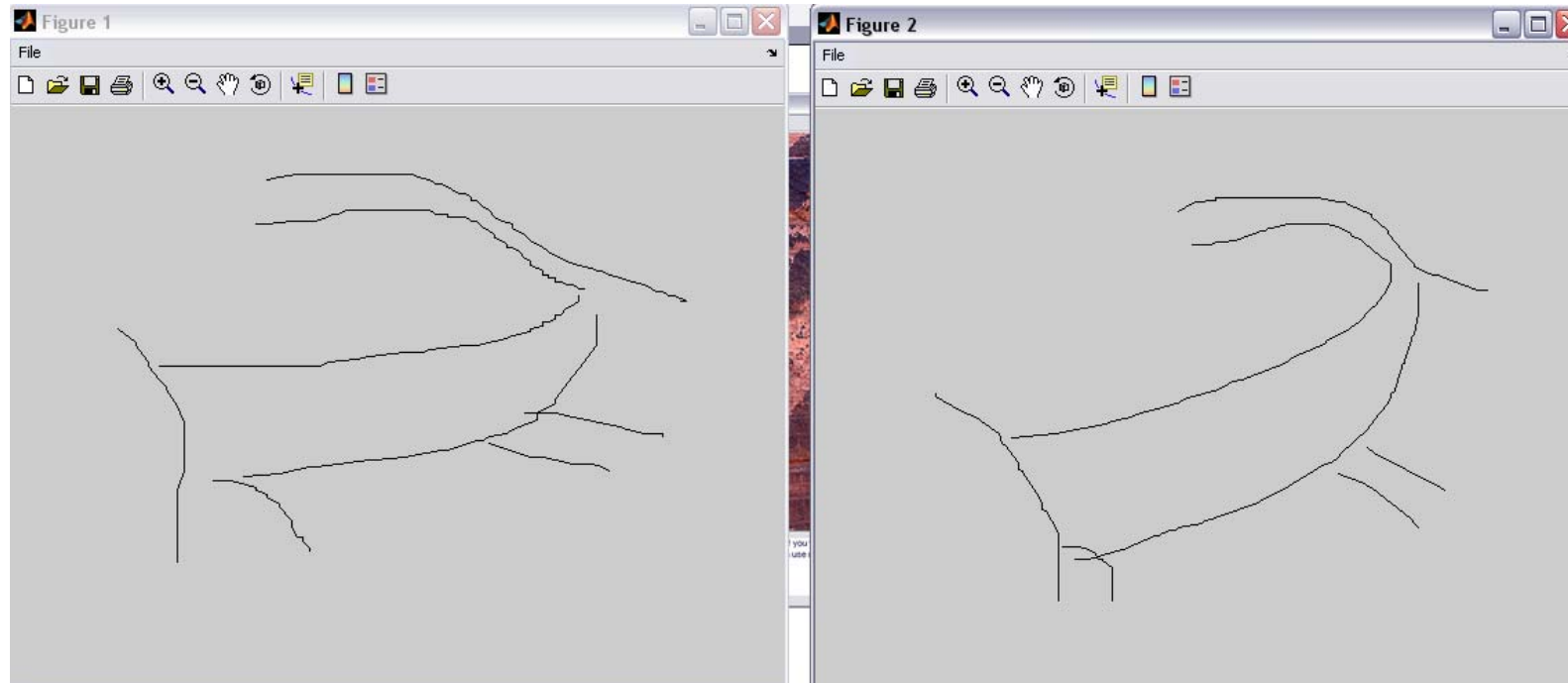
Step 5: Enter the label information



In this step, enter text label. This is your subjective opinion of what the petroglyph is. Obvious possibilities include: “abstract”, “sheep”, “Anthropomorph”. If unknown, you can leave it blank but have to enter some space into the box before you can continue.



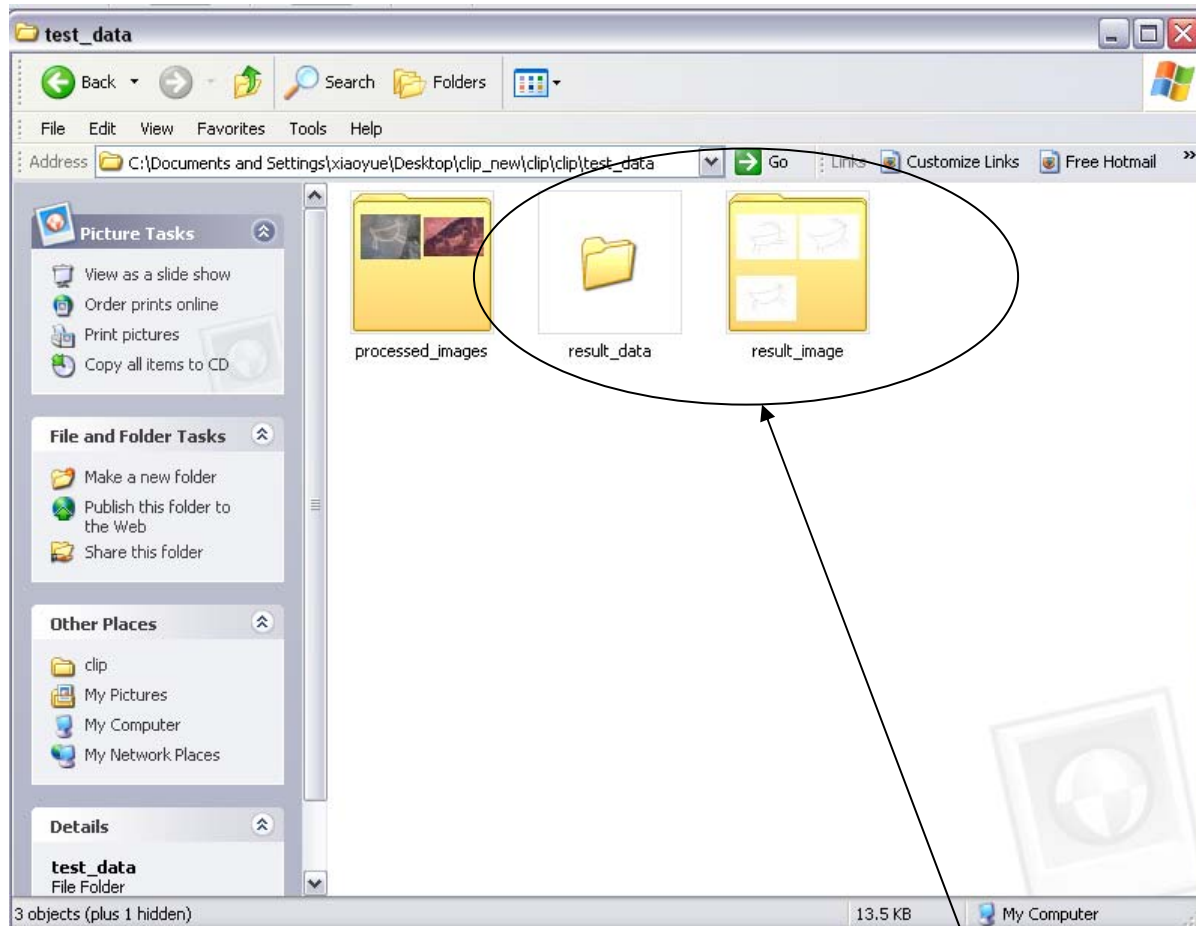
If there are multiple objects extracted from the input image, they will be displayed in the right column at the same time.



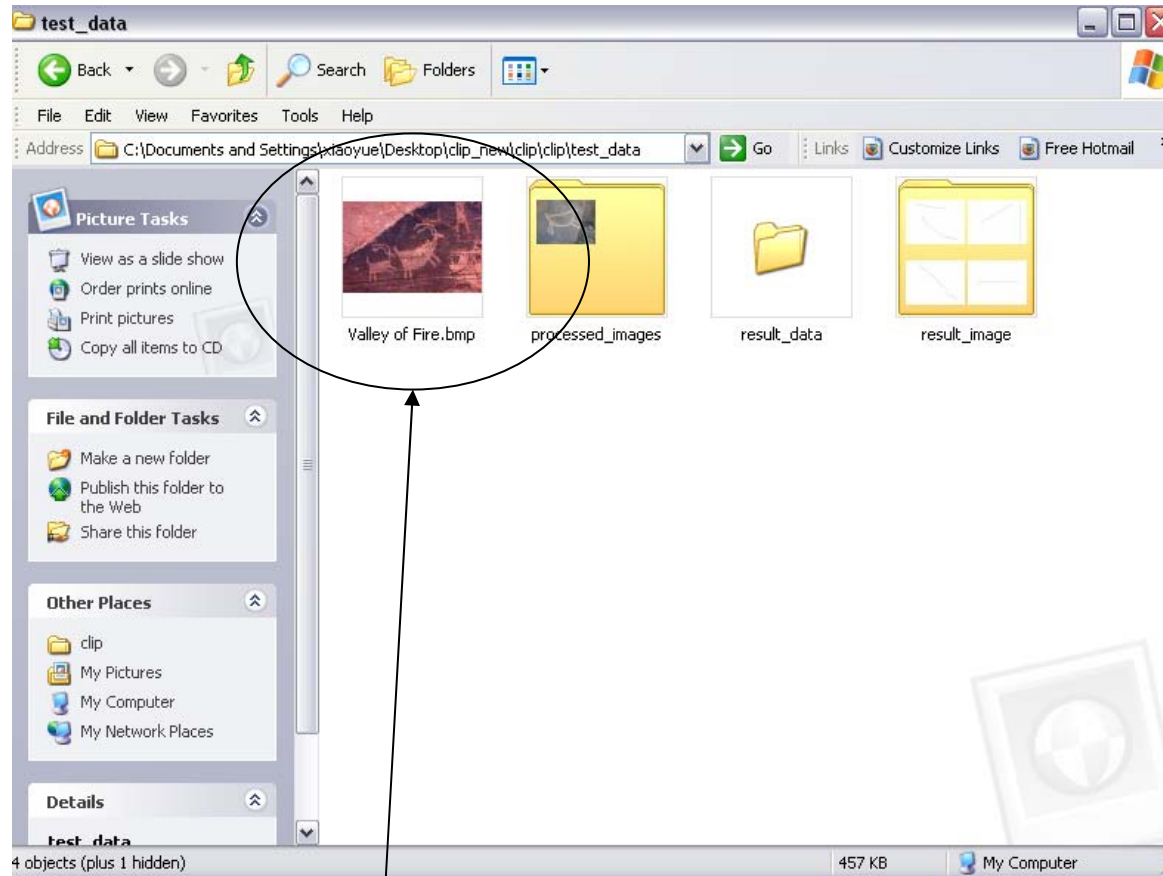
Also, the individual shape for each object will be displayed all along in this step.

Do not close these figures, they will be removed automatically when finishing this step.

Step 6: The result



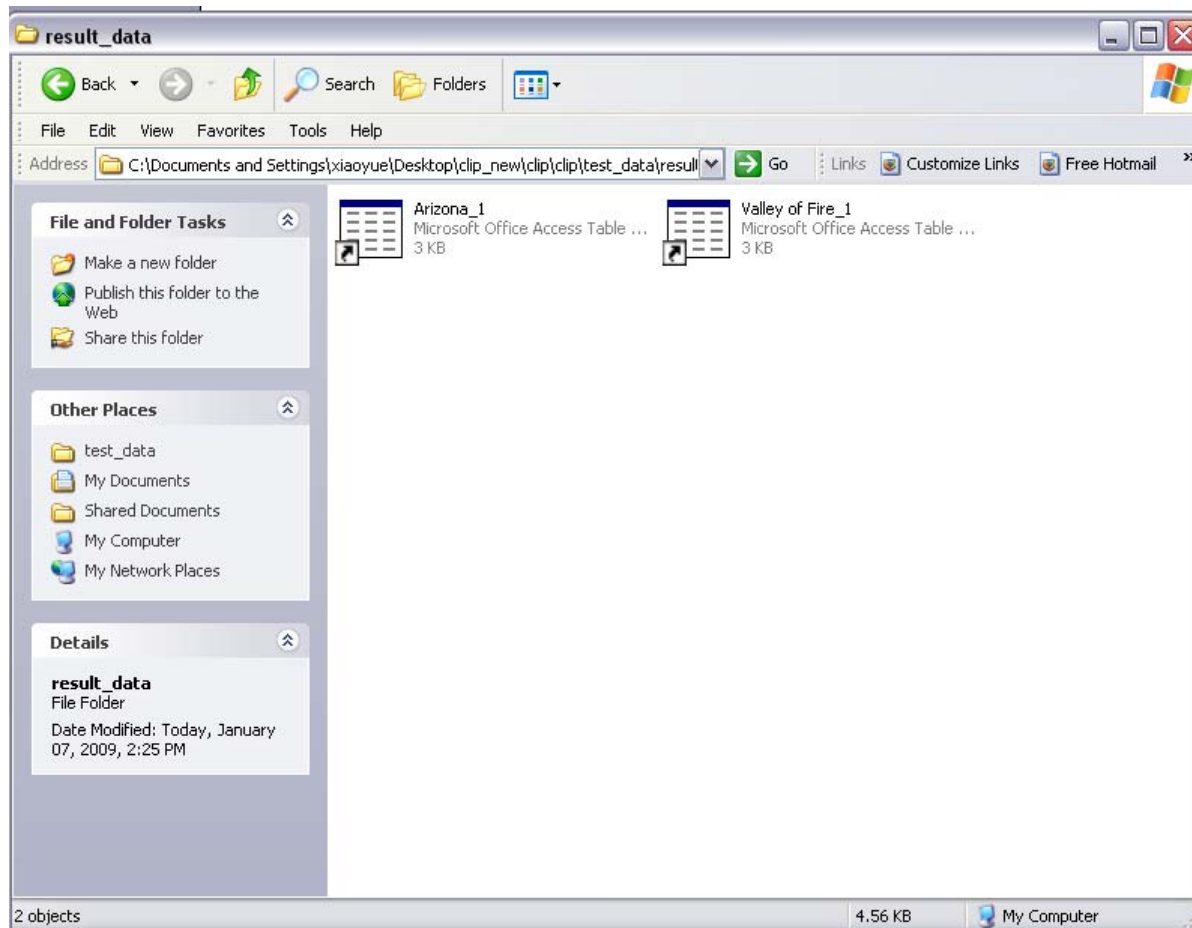
The results will be in the folder named “result_data” and “result_image”, it will be created automatically.



If only some images in the folder are processed, the un-processed ones will still shown in the directory.

In this example, the image “Valley of Fire.bmp” is the one still need to be processed and stays in the original directory.

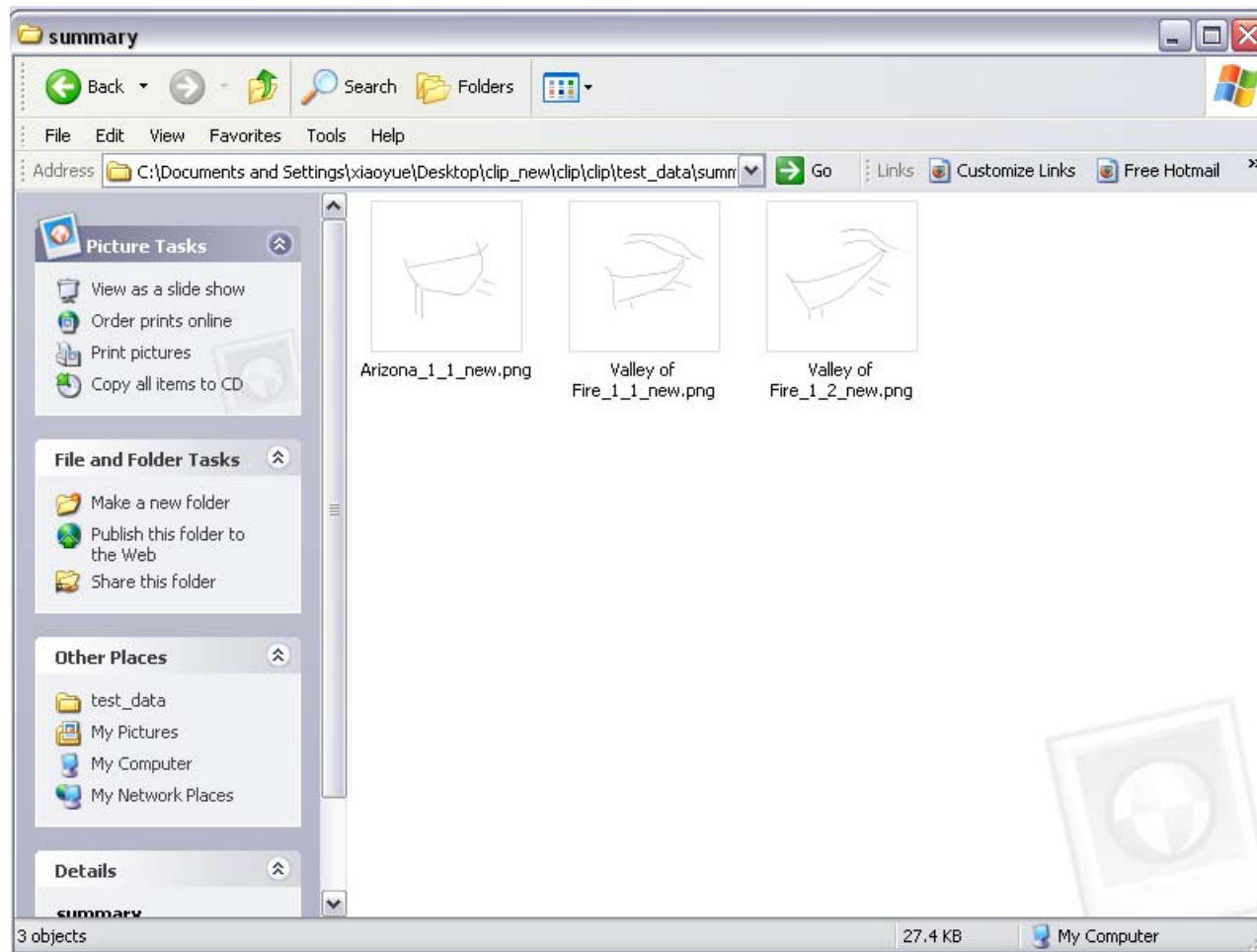
The result format(1/3): In “result_data” folder



For each original image A.jpg, we will have

- A.mat (recording all the statistical information)
- A_1.png A_2.png...(depending on how many different parts within the image)

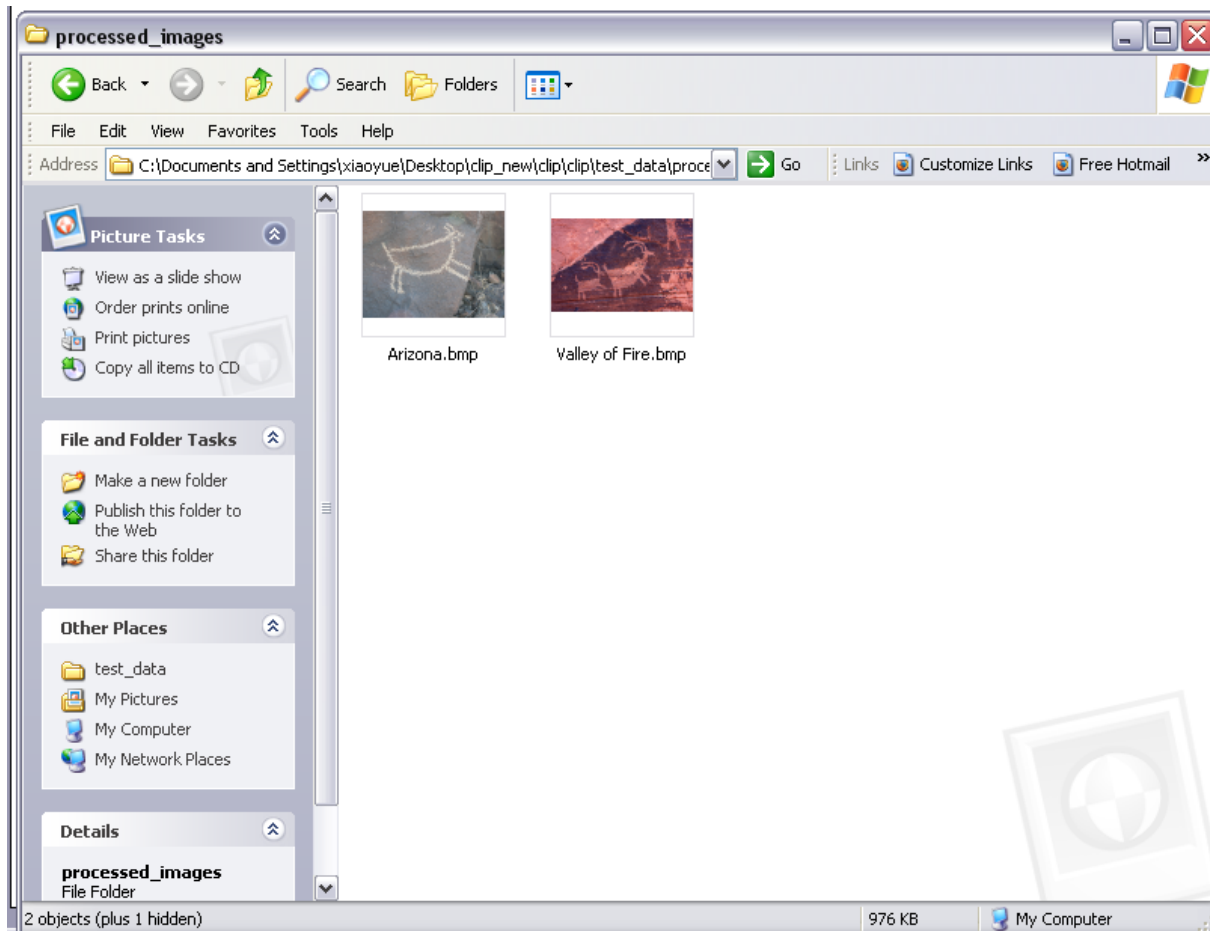
The result format(2/3): In “result_image” folder



For each original image A.jpg, we will have

- A.mat (recording all the statistical information)
- A_1.png A_2.png...(depending on how many different parts within the image)

The result format(3/3): In “processed_images” folder



For all the processed images, they will be moved to the folder “processed_images”. All the non-processed ones will still remain in the original directory.

Finish



After processing all images in the folder, a “finish” sign will show up.

Press any key to exit.

Samples

