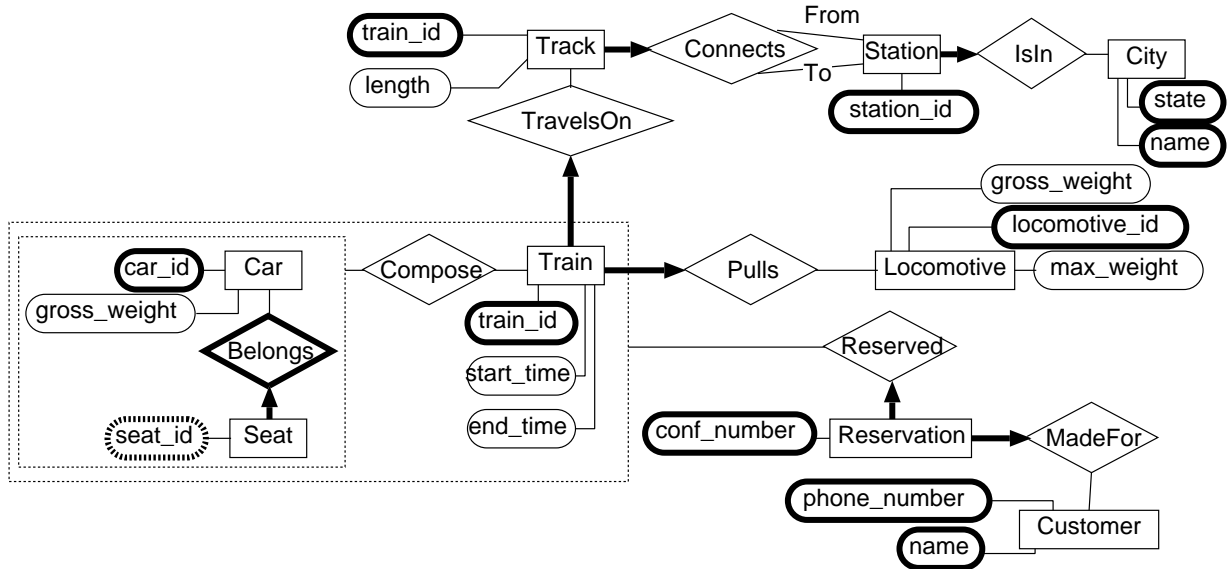


Computer Science 321  
 Database Systems  
 Fall 2003

HW 2    Due: October 8, 2003    Total weight: 100 pts.

1. [100pts] This exercise continues your work on the database for the VaRail railroad company. Assume that the following E-R schema has been deemed acceptable.



Derive a relational schema for it, justifying your choices when translating each E-R object into the relational model.

By the beginning of class on the due date, you must:

- Turn in a hard copy of your SQL commands to create the relations in your relational schema. (Hint: use normal LaTeX typesetting command for your writeup, use the LaTeX “verbatim” environment to typeset your SQL code).
- Send an email to your grader with the same SQL code as in your hard copy. (Hint: if you test your code on MySQL before sending it, at least you’ll know that it syntactically correct).